

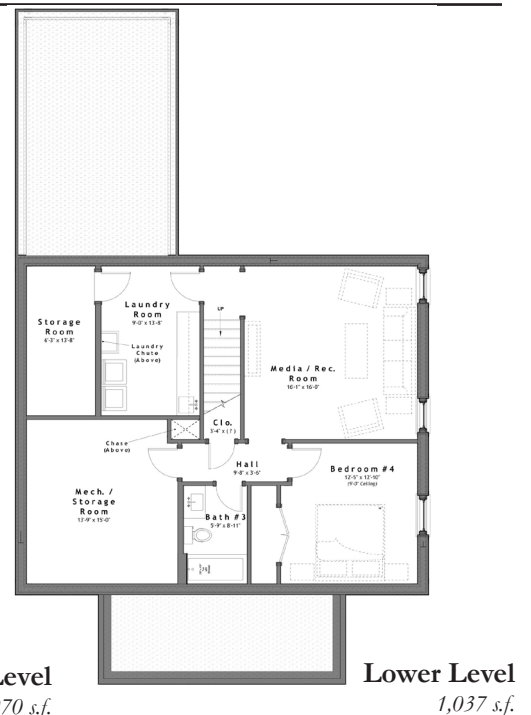
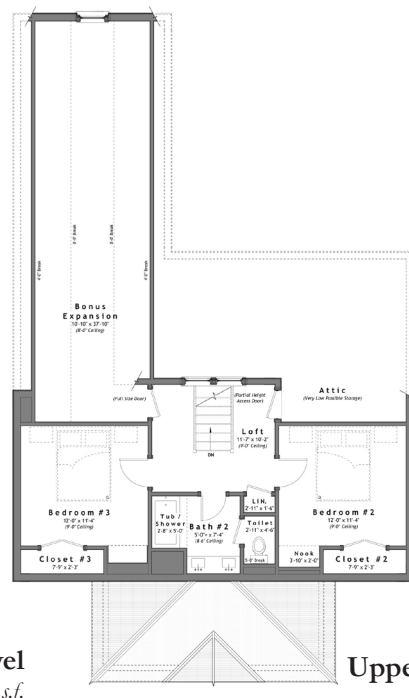
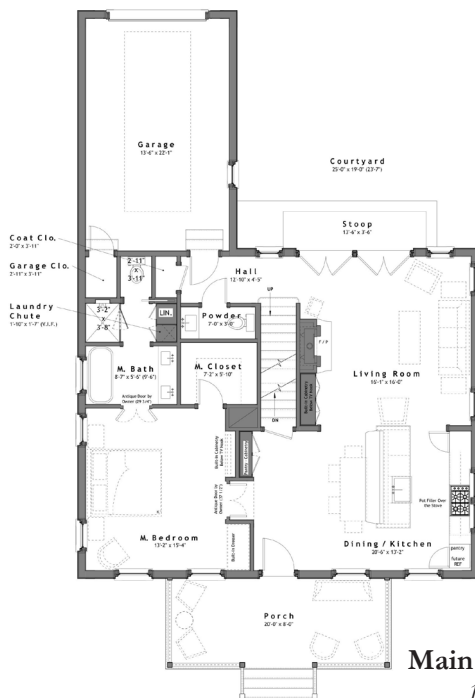


## SUMMARY :

*Total Area (Conditioned):* 3,390 s.f.  
*Bedrooms:* 4  
*Bathrooms:* 3 1/2  
*Width (Overall):* 37' - 10 1/2" (Including Siding/Trim)  
*Width (Framing):* 37' - 8"  
*Depth (Overall):* 62' - 3" (Including Front Porch)  
*Depth (Framing):* 53' - 6" (Excluding Front Porch)

## FEATURES :

- o 10'-0" Ceilings on Main Level, 9'-0" Ceilings on Upper Level
- o Open Floor Plan
- o Large Master Bedroom on Main Level
- o Fireplace w/ Built in Cabinetry
- o Large Basement w/ Recreation Room & Extra Storage Space
- o Future Expansion - Bonus Room on Upper Level
- o Large Secluded Laundry Room in Basement



*Design modifications and/or alternate elevations may be required if building within the South Main Neighborhood. All dimensions are approximate. The final set of construction documents may vary or include minor modifications.*

**CRAFT DESIGN STUDIO**

14312 HOLLY SPRINGS DRIVE, HUNTERSVILLE, NC 28078  
 704.408.5501 TEL • WWW.CRAFTDESIGN-STUDIO.COM

© 2015 CRAFT DESIGN STUDIO, PLLC

**CDS - 3390**

PRICE CODE: A8