

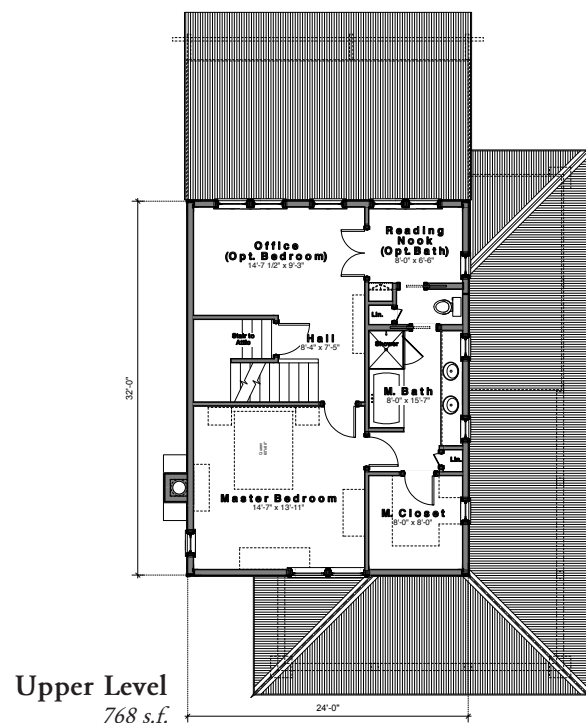
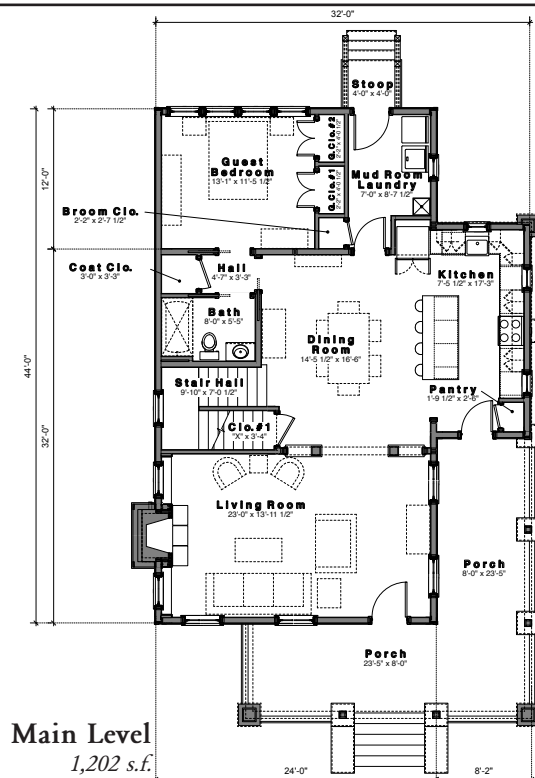


SUMMARY :

Total Area (Conditioned): 1,970 s.f.
 Bedrooms: 2 + Office & Nook
 Bathrooms: 2
 Width (Overall): 32-6 (Excluding chimney)
 Width (Framing): 24-0 (32) (Primary footprint 24x44)
 Depth (Overall): 52-6 (Excluding front stairs/rear stoop)
 Depth (Framing): 44-0 (Excluding porch, stoop & stairs)

FEATURES :

- o 10-0 ceilings on Main Level, 9-0 ceilings on Upper Level
- o Open kitchen/dining with island seating porch access
- o Large wrap around porch
- o Mud room / laundry room
- o Large master suite w/ optional bed/bath upstairs
- o Modular framing dimensions & truss roof for economy
- o Direct stair access to large attic and optional basement



Design modifications and/or alternate elevations may be required if building within the South Main Neighborhood. All dimensions are approximate. The final set of construction documents may vary or include minor modifications.

CRAFT DESIGN STUDIO

3016 SHILOH LANE, CHARLESTON SC 29414
704.408.5501 TEL • WWW.CRAFTDESIGN-STUDIO.COM

CDS - 1970