

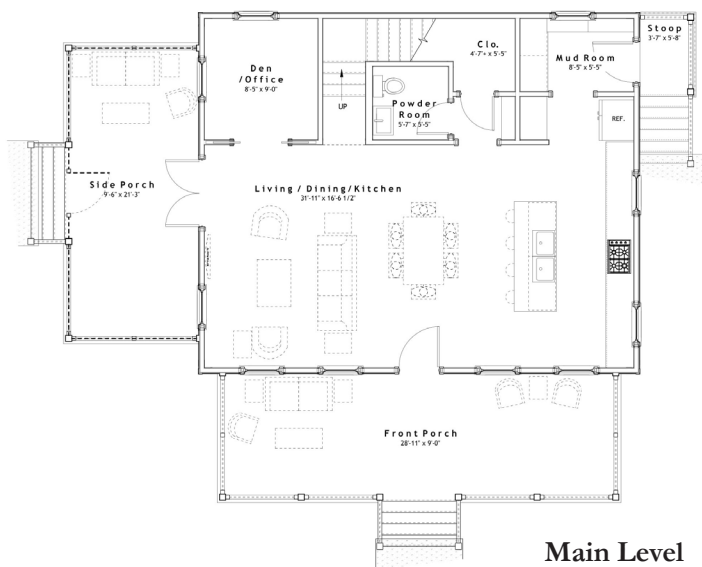


SUMMARY :

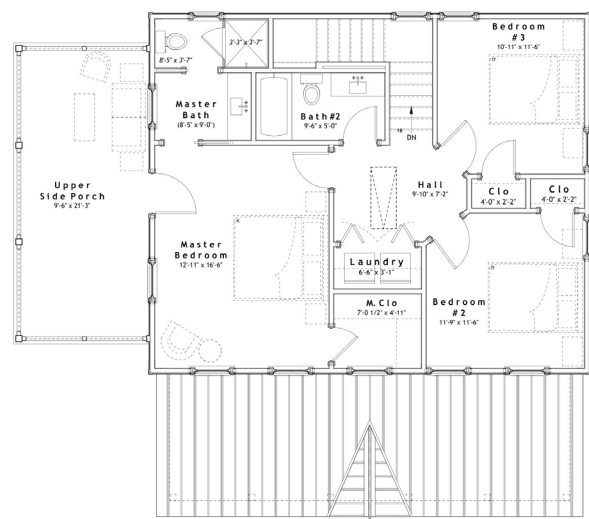
Total Area (Conditioned):	1,732 s.f.
Bedrooms:	3
Bathrooms:	2 1/2
Width (Overall):	40' - 9" (Including Siding/Trim/Porch)
Width (Framing):	32'-0"
Depth (Overall):	32'- 9" (Including Front Porch)
Depth (Framing):	24'- 0" (Excluding Front Porch)

FEATURES :

- o 10'-0" Ceilings on Main Level, 9'-0" Ceilings on Upper Level
- o Open Floor Plan
- o Compact, Efficient Floor Plan
- o Laundry Closet Accessible to Bedrooms
- o Large Front Porch and Two-Level Side Porch
- o Bonus Office/Den on Main Level
- o Large Master Bedroom w/ Access to Porch



Main Level
866 s.f.



Upper Level
866 s.f.

Design modifications and/or alternate elevations may be required if building within the South Main Neighborhood. All dimensions are approximate. The final set of construction documents may vary or include minor modifications.

CRAFT DESIGN STUDIO

14312 HOLLY SPRINGS DRIVE, HUNTERVILLE, NC 28078
704.408.5501 TEL • WWW.CRAFTDESIGN-STUDIO.COM

© 2015 CRAFT DESIGN STUDIO, PLLC

CDS - 1732

PRICE CODE: A4