

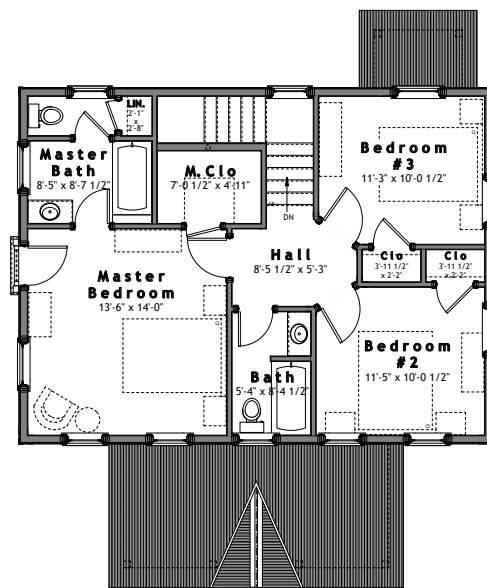
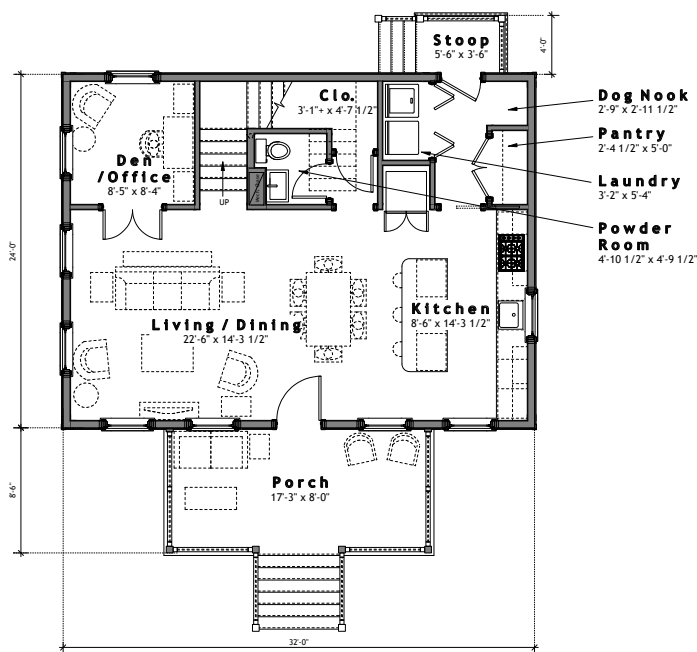


SUMMARY :

Total Area (Conditioned): 1,536 s.f. (24x32x2)
Bedrooms: 3 + Office
Bathrooms: 2 1/2
Width (Overall): 32'-2 1/2" (Including Sheathing/Siding)
Width (Framing): 32'-0" (Excluding Sheathing/Siding)
Depth (Overall): 40'-6" (Including Front Porch/Rear Stoop)
Depth (Framing): 24'-0" (Excluding Porches & Stairs)

FEATURES :

- o 10'-0" Ceilings on Main Level, 9'-0" Ceilings on Upper Level
- o Open Floorplan
- o Open Kitchen with Island Seating and Large Pantry
- o French Balcony in Master Bedroom
- o Plan Shown w/ Wide Side as Front
- o Option: [Narrow Side Front (Sideyard House, etc.)]
- o Option: [Convert to Attached Unit & Omit Side Windows]



Design modifications and/or alternate elevations may be required if building within the South Main Neighborhood. All dimensions are approximate. The final set of construction documents may vary or include minor modifications.

CRAFT DESIGN STUDIO

P.O. BOX 5238 BUENA VISTA, COLORADO 81211
 704.408.5501 TEL • WWW.CRAFTDESIGN-STUDIO.COM

CDS - 1536