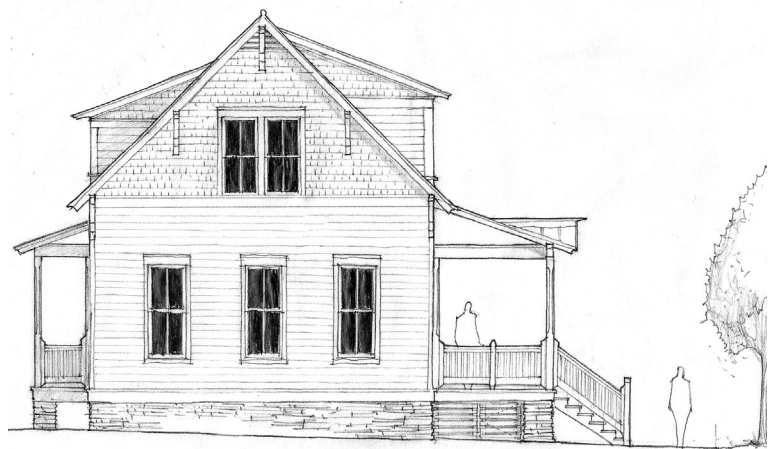




Front Elevation (A)



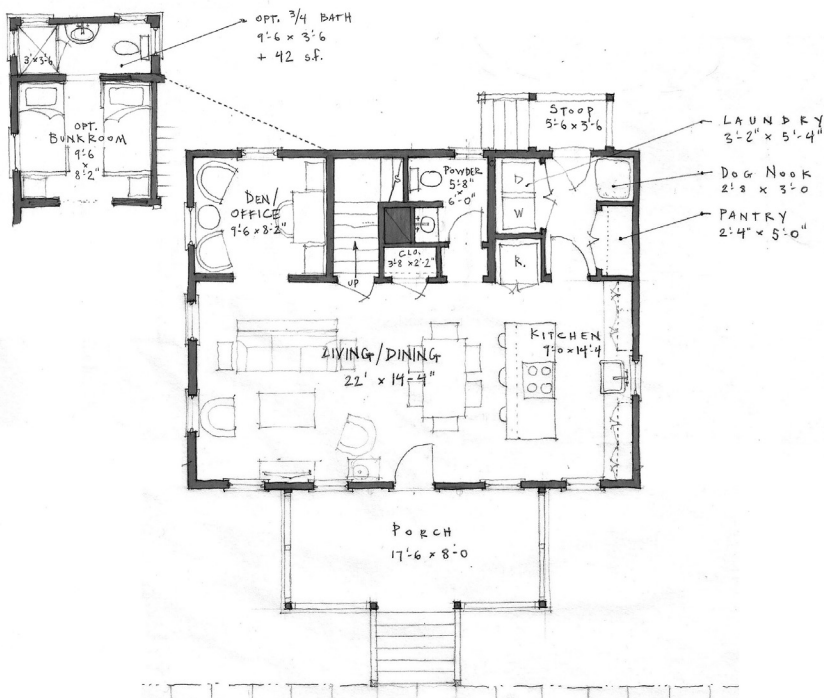
Side Elevation or Front Elevation (B)

SUMMARY :

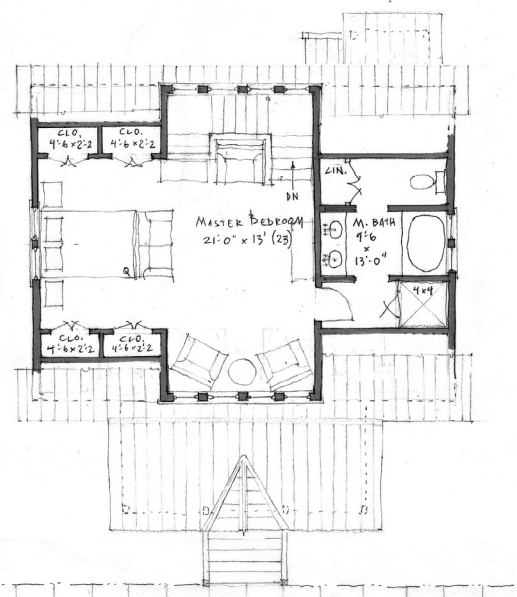
Total Area (Conditioned): 1,375 s.f. (24x32 Footprint)
 Bedrooms: 1 + Office
 Bathrooms: 1
 Width (Overall): 32-2 (Including sheathing/siding)
 Width (Framing): 32-0 (Excluding sheathing/siding)
 Depth (Overall): 40-6 (Including front porch/rear stoop)
 Depth (Framing): 24-0 (Excluding porches & stairs)

FEATURES :

- o 10-0 ceilings on Main Level, 9-0 ceilings on Upper Level
- o Open floor plan
- o Open kitchen with island seating and large pantry
- o Spacious light filled master suite w/ sitting area
- o Lower level den/office w/ optional bunk room
- o Optional 3/4 bath attached to bunk room (+ 42 s.f)
- o Option: [narrow side front (sideyard house, etc.)]



Main Level
768 s.f.



Upper Level
607 s.f.

Design modifications and/or alternate elevations may be required if building within the South Main Neighborhood. All dimensions are approximate. The final set of construction documents may vary or include minor modifications.

CRAFT DESIGN STUDIO

3016 SHILOH LANE, CHARLESTON SC 29414
 704.408.5501 TEL • WWW.CRAFTDESIGN-STUDIO.COM

CDS - 1375